

APPENDIX A: MAPS



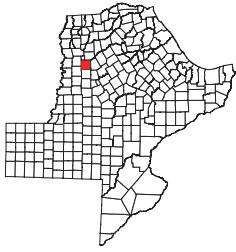
© 2004 Texas Department of Transportation



**FIGURE 1
PROJECT LOCATION MAP**

Spur 366
From IH 35E
to Beckley/Singleton Intersection
CSJ: 0196-07-018

ENVIRONMENTAL ASSESSMENT
DALLAS COUNTY, TEXAS



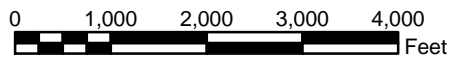
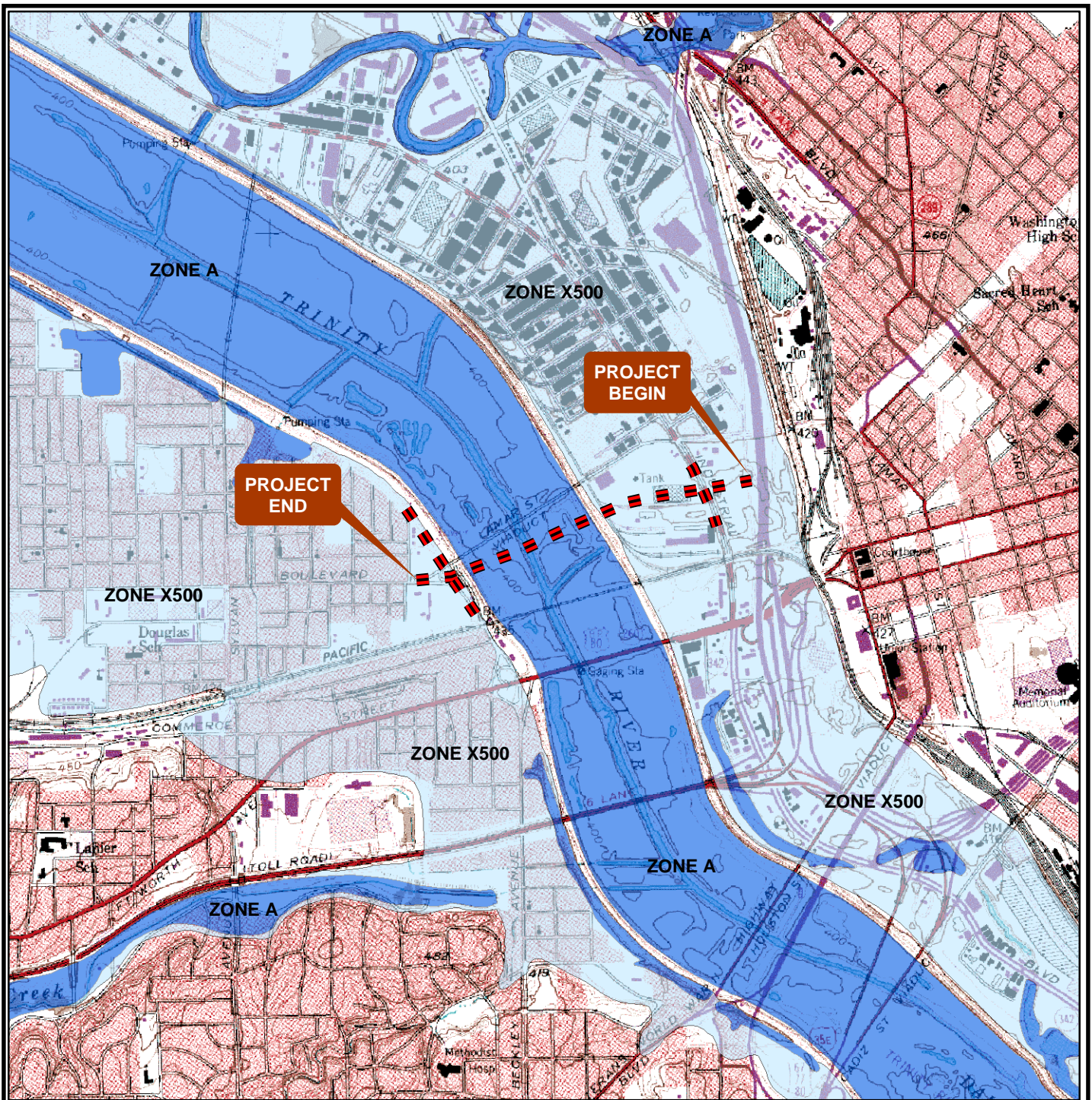
© 2004 Texas Department of Transportation

FIGURE 2
Project Centerline
Map with ROW

Spur 366
 From IH 35E
 to Beckley/Singleton Intersection
 CSJ: 0196-07-018
 ENVIRONMENTAL ASSESSMENT
 DALLAS COUNTY, TEXAS



— Proposed ROW
 — Existing ROW



Adapted from the Dallas, TX, FEMA Floodplain & USGS Topographic Quadrangle Maps

© 2004 Texas Department of Transportation

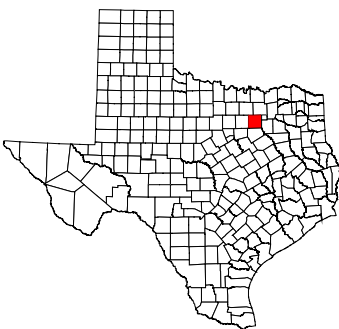
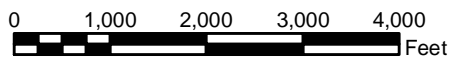


FIGURE 3 USGS Topographic & FEMA Floodplain Map

Spur 366
From IH 35E
to Beckley/Singleton Intersection
CSJ: 0196-07-018

ENVIRONMENTAL ASSESSMENT
DALLAS COUNTY, TEXAS



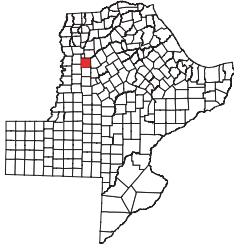
© 2003  Texas Department of Transportation



FIGURE 4
2000 Census Map
(Block Groups)

Spur 366
 From IH 35E
 to Beckley/Singleton Intersection
 CSJ: 0196-07-018

ENVIRONMENTAL ASSESSMENT
 DALLAS COUNTY, TEXAS



© 2004 Texas Department of Transportation

FIGURE 5
Woodlands Map

Spur 366
From IH 35E
to Beckley/Singleton Intersection
CSJ: 0196-07-018
ENVIRONMENTAL ASSESSMENT
DALLAS COUNTY, TEXAS

